



**CAUTION**

**ACHTUNG**  
**ATTENTION**  
**CUIDADO**

OSCILLATING  
PUMPS



## OSCILLATING PUMPS

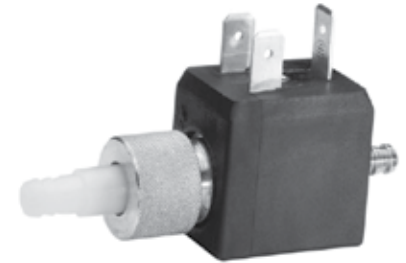
ITT Flojet oscillating pumps are designed for general consumer, commercial and industrial applications. All models are self-priming double insulated and built to draw low amps for cool operation and can run dry for extended periods of time without damage.



MODEL ET508 SERIES (HB)

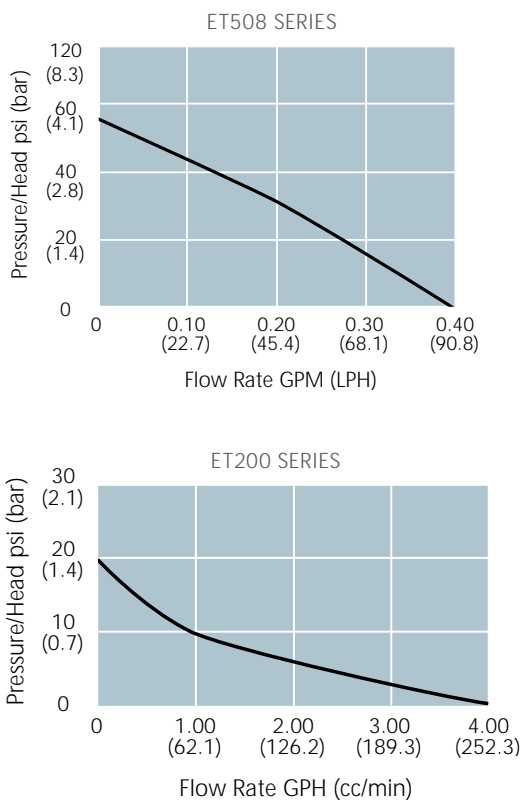


MODEL ET508 SERIES (FNPT)



MODEL ET200 SERIES

### PERFORMANCE



### SPECIFICATIONS

Type of Pump	ET508-HB	ET508-FNPT	ET200
Temperature	Max. 160° F/71°C	Max. 160° F/71°C	Max. 176° F/80°C
Open Flow Rate	.40 GPM/90 LPH	.40 GPM/90 LPH	3.8 GPH/240 cc/min.
Length	5.54" (140.6mm)	4.53" (115.0mm)	2.75" (70mm)
Width	2.25" (53.6mm)	2.25" (53.6mm)	.87" (22mm)
Height	2.11" (53.5mm)	2.11" (53.5mm)	1.55" (39.5mm)
Maximum Pressure	55 PSI/3.8 Bar	55 PSI/3.8 Bar	20 PSI/1.4 Bar
Self-Priming (up to)	6 (inHg)	6 (inHg)	1.3 (inHg)
Standard Voltage	115V/60Hz and 230V/50Hz, other voltages available.		
Power Consumption (nominal)	46 Watts	46 Watts	18.5 Watts
Insulation Class	F (155° C)	F (155° C)	H(180° C)
Elastomers	EPDM and Viton		
Piston and Spring	Stainless Steel for all models		
Filtering	4/1000 Mesh		
Approvals	U.L. and CSA Recognized, CE Certified*		

\* Approvals vary within the Product Line. Contact a Flojet Representative for specific model listings, recognitions and certifications.

*Includes internal diode (except ET200 which requires an external diode).*

### MODELS

MODEL #S	CE	UL	VOLTAGE	CHECK VALVE MTL.	PORT TYPE
ET508-221	YES	NO	115VAC	EPDM	1/4" (6.4mm) Hose Barb
ET508-223	YES	NO	115VAC	EPDM	1/8" (3.2mm) FNPT
ET508-224	YES	NO	115VAC	VITON	1/8" (3.2mm) FNPT
ET508-244	YES	NO	230VAC	VITON	1/8" (3.2mm) FNPT
ET200-021	YES	YES	115VAC	EPDM	.24" (6.1mm) HB X .20" (5.1mm) HB









